



# Sigsense Technologies

## AI for Lab Operations

Sigsense tracks **all testing equipment** in your lab to generate a **real-time view** into **availability, productivity, and downtime.**



### Increase Throughput

Track true instrument productivity to optimize equipment usage and allocate resources as efficiently as possible.



### Improve Efficiency

Understand the impact of workflow, downtime, and waste on lab productivity.



### Eliminate Disruptions

Enable immediate corrective action with real-time notification of operational issues.

**THE  
INSIGHTS  
YOU NEED TO  
DRIVE ACTION**



# THE RIGHT DATA FOR THE RIGHT DECISIONS

Sigsense is the only monitoring platform capable of understanding your lab's instruments to deliver a complete picture of operations in real time.

## Real-time dashboards:

- Quickly identify assets experiencing issues, idle times, and downtime
- Deep dive into machine behaviors, both current and historical

## Smart reports:

- View reports that highlight utilization, downtime, productivity, and other KPI metrics
- View current and historical performance trends to optimize equipment fleets

## Downtime Alerting:

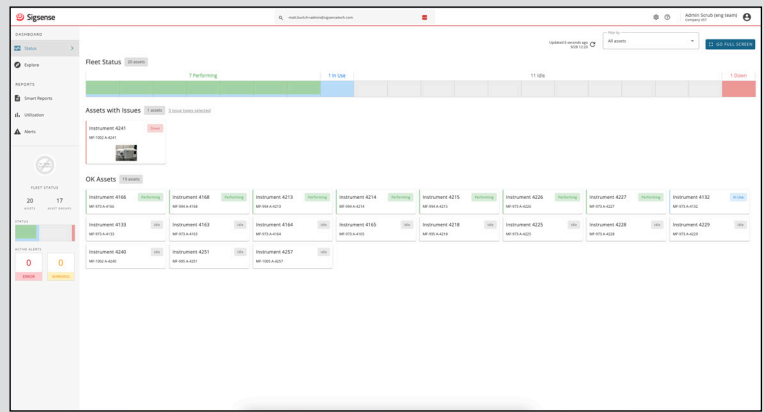
- Receive alerts the moment an issue occurs to minimize downtime
- Eliminate unnecessary stoppages, faults, and waste

## Capacity Monitoring:

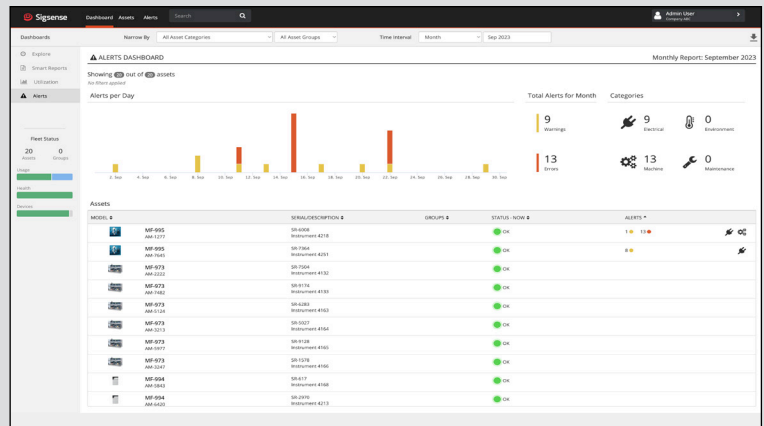
- Track equipment performance to identify capacity bottlenecks
- Get shift and workflow summaries to identify opportunities for improvement

## Environmental Monitoring:

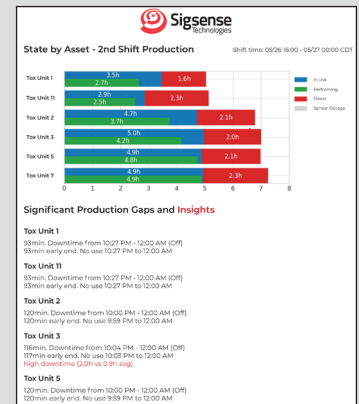
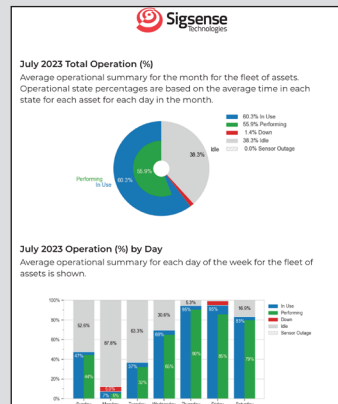
- Measure and catalog stats around temperature, humidity, energy usage, and power
- Recognize when environmental impacts are affecting instrument performance



View your entire fleet's utilization status in real time



Track critical machine, downtime, and environmental issues



Smart reports provide in-depth performance overviews

## What makes Sigsense different

Power is expressive—it contains information about everything your instruments are doing.

Sigsense pairs cutting-edge AI with non-invasive power sensors to extract and interpret that information, generating unprecedented operational insights.

The result: a monitoring platform that integrates with any device powered by electricity, delivers detailed performance reporting, and automatically adapts to changes as your lab evolves.

SCHEDULE A DEMO TODAY: [INFO@SIGSENSETECH.COM](mailto:INFO@SIGSENSETECH.COM)

