

PREDICTIVE ASSET MANAGEMENT PLATFORM OVERVIEW

High-throughput labs are demanding operational environments.

Small issues result in waste that can increase costs, reduce revenue, or hurt quality and customer perception.

Stoppages impacting sample turn-around-time; workflow inefficiencies reducing throughput and increasing reagent expenses; even the difficulty of quantifying overall lab efficiency—issues like these make accurately measuring capacity nearly impossible.

Sigsense leverages AI to give you perfect visibility, helping you identify and eliminate waste and avoid unexpected downtime.

Our platform delivers a comprehensive, real-time picture of your operations that allows you to recognize and address issues proactively, delivering optimized service contracts, improved productivity, more efficient workflows, a lower expense base, and increased performance.

It works in any laboratory regardless of age, equipment, or function, and fits perfectly in enterprises that span multiple facilities. Taken together, the outcomes include better informed operations and management decisions backed by hard numbers.

In other words, **we give you the tools to unlock your lab's full potential.**

AI FOR LAB OPERATIONS

- The Sigsense platform uses AI to understand and quantify the performance of each piece of equipment in your lab, generating metrics for productivity, availability, condition, and other similar aspects down to the minute.
- This data is analyzed to generate a detailed, real-time view into your entire lab operation, identifying signs of pending equipment issues, environmental concerns, and workflow disruptions then immediately notifying the right people to correct them before they cause serious problems.
- It can integrate seamlessly with any instrument or machine that runs on electricity, from a 30-year old serology machine to a brand new mass spec or even a deep freezer.
- And instead of understanding equipment in isolation, the platform lets you view your entire infrastructure holistically. Issues which affect lab productivity and capacity as a whole are highlighted, providing a means to address them systemically rather than mis-allocating your resources on one piece or cluster of equipment.

WHAT SIGSENSE DELIVERS

Optimization & Consistency

Sigsense gives you the tools to prevent minor hiccups from becoming major problems —24/7 equipment monitoring and real-time issue alerts. The result? Confidence your lab is performing at the highest possible levels.

Complete Visibility

The data we generate is used to optimize day-to-day operations, true. But it also gives you total (and remote) visibility into each machine, process, lab, facility, or campus, providing up-to-the-minute accountability and allowing you to view your entire operation regardless of your scale.

Consistent Records

Historical data and comparisons are also a part of the package, so you can easily identify intriguing trends. Maybe they're opportunities to improve your organization, maybe they're indicators a particular process will have significant negative long-term consequences—either way, you'll have all the details needed to explain why.

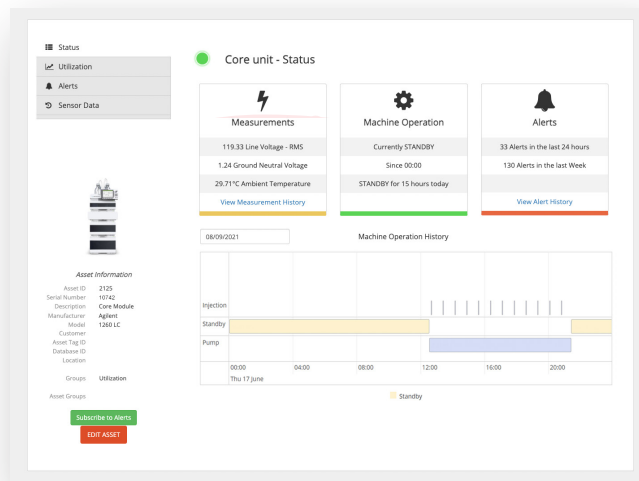


Fig 1: Get a 24/7 view into equipment behavior

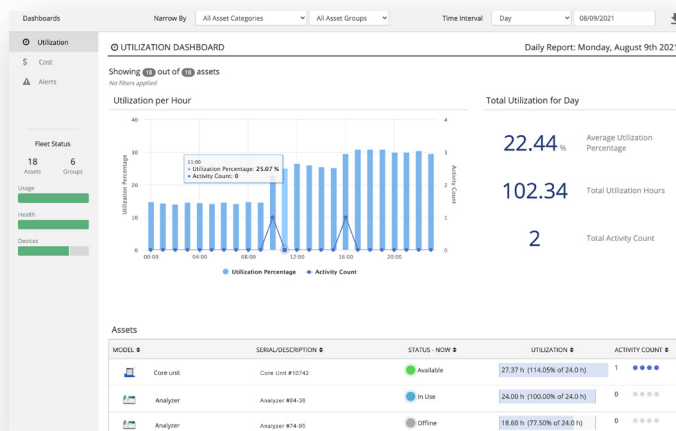


Fig 2: Track productivity across each machine, all lines, and entire facilities



AI IS THE FUTURE OF LAB OPERATIONS

The Sigsense Predictive Asset Management platform uses AI to help lab leaders recognize and understand problems, risks, and improvement opportunities better—not just as they happen now, but in the future as well.



350 Townsend St. Suite 100 San Francisco, CA 94107
info@sigsensetech.com